

CESAB
FORKLIFTS

Li-ION

*Compact, manoeuvrable,
stable and efficient*

P013i

Maximum efficiency
with our Li-ion powered
pallet truck delivering
the highest level of
safety, speed and
productivity.



www.cesab-forklifts.eu



Fast and simple battery exchange, with safe and easy to use connectors.

Li-ion battery technology, can be charged anywhere so there is no necessity for a dedicated charging space.





Epic Energy

A superior 24V 36Ah battery,
almost the double capacity
of equivalent models.

The powerful
battery comes
in cassette format,
fully sealed and easy to
handle. The connectors are
protected so no risk of short circuits.

24V36Ah

Quick Charging

The 12A fast charger is standard, over and above the normal 8A rate of similar pallet trucks.

Charge only for Li-ion batteries

- LED MODE :
- Waiting mode: LED (Green) ON always.
 - Charging mode: LED (Yellow) FLASH.
 - Full charged mode: LED (Green) ON always.
 - Error mode: LED (Red) FLASH.



Quick and easy charging in 2.5 hours or less.



Zero maintenance Li-ion technology, with no capacity-lowering memory effects.

Reliable and well-engineered battery connectors.



Both the drive wheel and the castor wheels have safe foot protections as standard.



Easy long-side pallet handling. Twin fork wheels as standard, for reduced pressure on floors and easier and silent travel over uneven surfaces.



Stable as a Rock

Stable with standard
caster wheels offering
5 points of contact.

The rugged construction of the caster wheels and the 80mm diameter don't fear loading boards or docks.



Max Manouvers

Only 540mm wide,
1.3 tonnes capacity and
great 115mm lift height.

The 195° steering angle
allows easy maneuvering,
even in the tightest spaces.



Faster drive speeds of 4.8 km per hour, and turtle speed when tiller arm is in vertical position.

Ergonomic butterfly switches for easy driving. Separated buttons for fast lifting and lowering. The standard PIN-pad prevents unauthorised use.



Safe speed reduction when cornering, included as standard.





Next level...

Mechanise your
material handling
and boost your
productivity.

The CESAB P013i combines the comfort of a powered pallet truck with the flexibility and manoeuvrability of a hand pallet truck. This new entry model is the answer to light electric pallet truck applications. Powered by li-ion technology, it can handle loads up to 1300 kg.



Usable

Effortless manoeuvrability



Compact

perfect in confined areas



Ergonomic

Designed for easy use



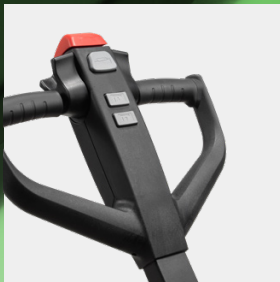
Light

ideal on weight restricted floors



Authorised

PIN code user access



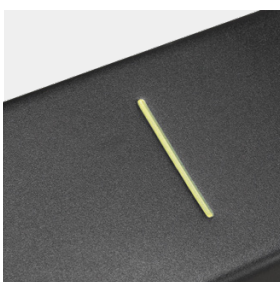
User friendly, intuitive controls



High capacity Li-ion 24V 36Ah battery



Simple and fast changing in 2.5 hours



Fork marks for easy pallet handling

Standard truck execution

- Butterfly drive switches
- Separated lift/lower buttons
- PIN code access
- LCD display
- Gas spring assisted tiller arm
- Driving with upright tiller arm
- Turtle speed mode
- Auto lock on slopes
- 210 mm polyurethane drive wheel
- Bogie fork wheels
- Climber wheels at fork nose
- Castor wheels with foot protection
- Easy accessible emergency switch
- Tiller arm safety button
- Horn switch
- Closed cover design
- Foot protection cover

Specifications

Service weight with battery	135 kg
Nominal capacity	1300 kg
Load centre	600 mm
Overall length	1530 mm
Length to fork face	380 mm
Overall width	540 mm
Turning radius	1330 mm
Speed, with/without Load	4.6/4.8 km/h
Drive motor rating S2 60 min	0.65 kW
Sound level EN 12053	<70 dB(A)

Super Support

Service, support and parts availability through our large dedicated network.

